

The Makings of a Resilient Community



PRESENTED BY:

Tru-Kechia Smith

Executive Director ArtsTech



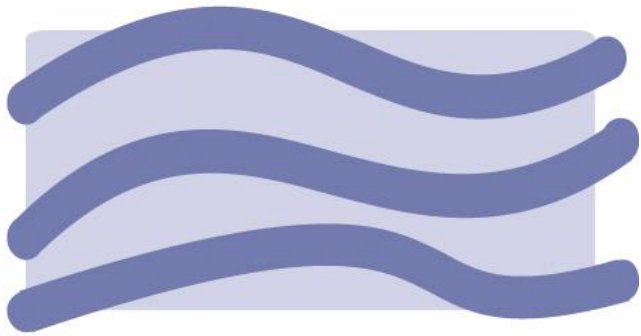
PRESENTED BY:

Joe Wheelock

Program Manager Heartland Tree Alliance



Bridging The Gap



Bridging The Gap

RECYCLING

WATER AND ENERGY CONSERVATION

VOLUNTEERISM

HEARTLAND TREE ALLIANCE

KC WILDLANDS

LITTER ABATEMENT

WORKFORCE DEVELOPMENT

THE ORIGINS OF HEARTLAND TREE ALLIANCE

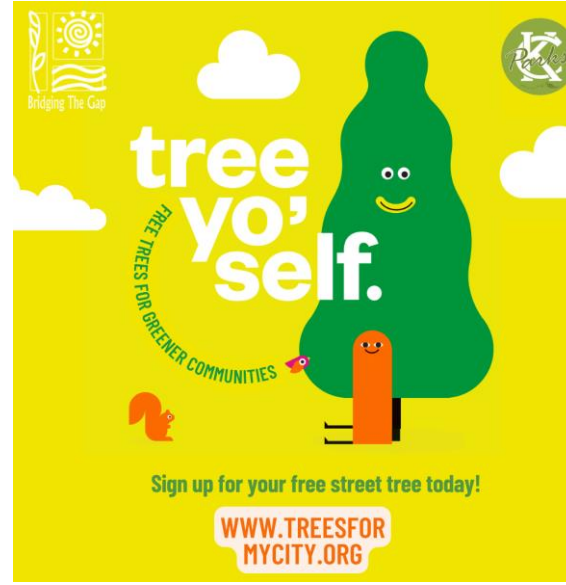
- After the devastating ice storm of 2002, stakeholders convened and created a program for urban trees.
- In 2004 the all volunteer board came under **Bridging The Gap** as a program and hired our first staff.



PROGRAM AREAS & PARTNERS

Tree Planting
Young Tree Maintenance
Education
Advocacy





TREE PLANTING

- Public Tree Planting
- Private Tree Planting
- Tree Give aways





TREE PRUNING

EDUCATION: TREE KEEPERS

- **12 hours of classroom education, 6 hours hands on**
- **Topics covered:**
 - Urban Forests - Intro to Trees and Tree ID
 - Urban Soils and Basic Tree Biology
 - Tree Planting and Establishment Care
 - Pruning
 - Pests, Diseases and other Problems



EDUCATION: TREE CORPS



Tree Corps pre-apprentice program

- 10 week program @ 32 hrs/week
- Paid - \$16.50/hr
- Participants get free access to: OSHA 10, CPR/First Aid, TCIA certifications and HTA Tree Keeper class
- Other components: soft skills, technology literacy, resume building

STRONGER COMMUNITIES THROUGH HEALTHY TREES

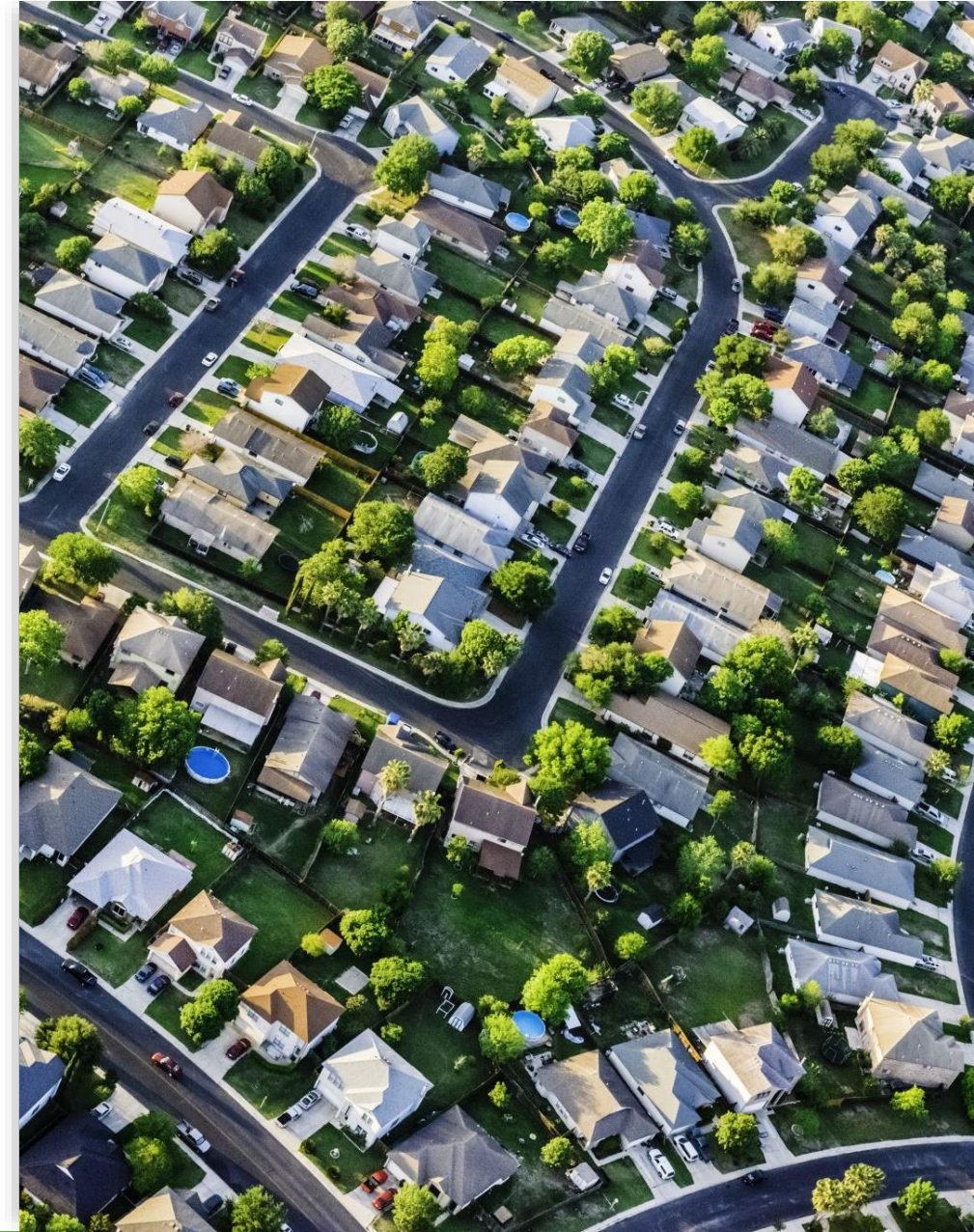


WHAT MAKES A RESILIENT COMMUNITY?



WHAT MAKES UP A RESILIENT COMMUNITY?

- No One size fits all approach
- Even adjoining neighborhoods may have different needs
- So how do you know?





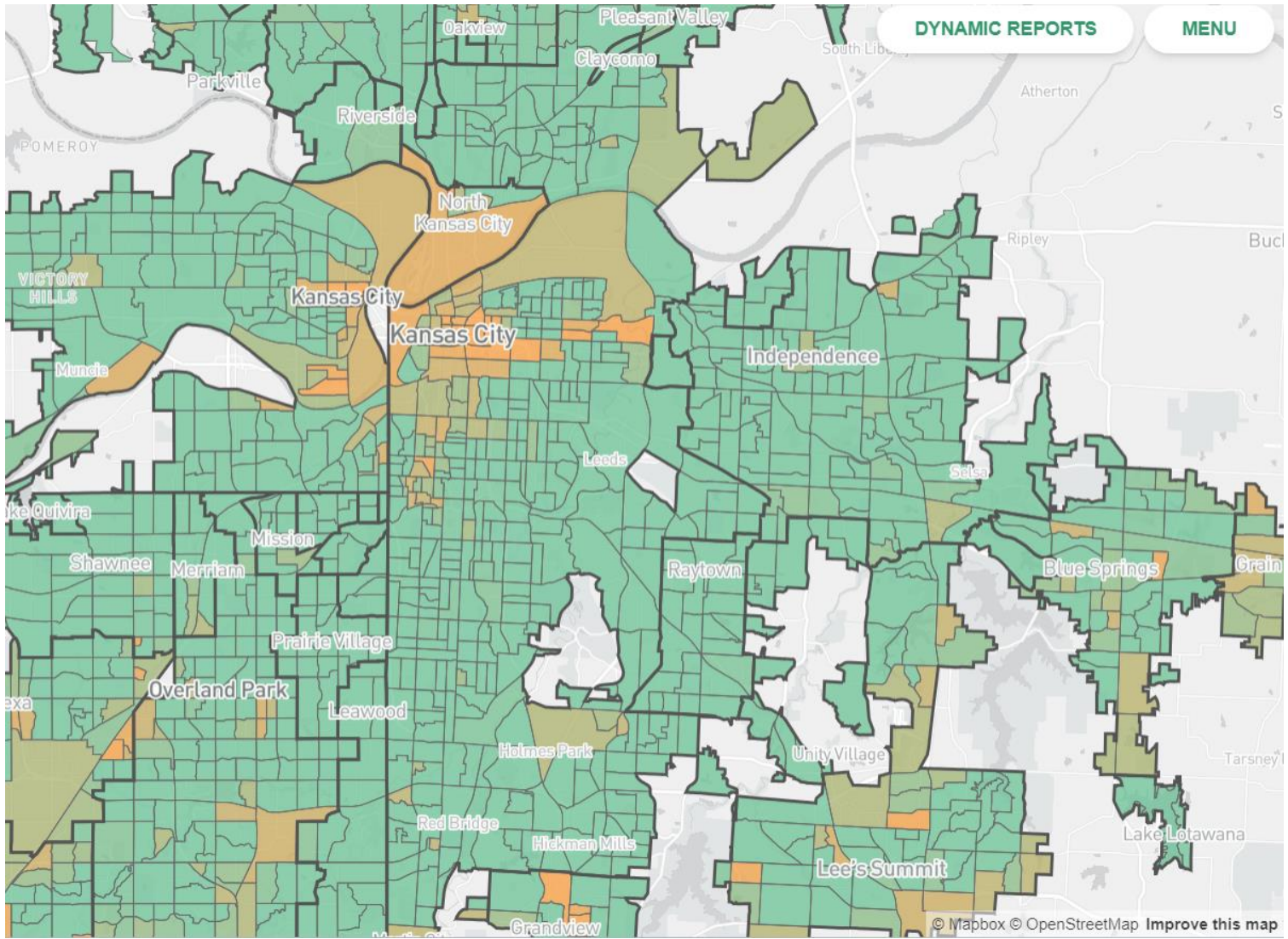
THE POWER OF DATA

KANSAS CITY MO

32%



ACRES	CANOPY ACRES	CANOPY PERCENT	IMPERVIOUS ACRES	IMPERVIOUS PERCENT	PERVIOUS ACRES	PERVIOUS PERCENT	BARE SOIL ACRES	BARE SOIL PERCENT	WATER ACRES	WATER PERCENT
791.20	466.22	58.93	85.08	10.75	190.79	24.11	5.47	0.69	43.64	5.52
396.57	9.82	2.48	361.14	91.07	21.47	5.41	3.86	0.97	0.27	0.07
79.56	15.45	19.42	45.25	56.88	17.82	22.40	1.04	1.30	0.00	0.00
307.79	134.80	43.80	71.73	23.31	96.85	31.47	1.48	0.48	2.92	0.95
169.41	69.71	41.15	66.49	39.25	33.03	19.50	0.19	0.11	0.00	0.00
383.10	182.96	47.76	111.43	29.09	77.47	20.22	7.46	1.95	3.78	0.99
657.97	263.84	40.10	204.92	31.14	151.35	23.00	2.62	0.40	35.25	5.36
169.19	52.89	31.26	64.61	38.19	51.37	30.36	0.32	0.19	0.00	0.00
740.46	358.59	48.43	225.51	30.46	154.22	20.83	0.00	0.00	2.14	0.29
164.86	75.75	45.95	36.53	22.16	52.47	31.82	0.11	0.07	0.00	0.00
164.19	60.78	37.02	81.82	49.83	19.00	11.57	2.59	1.58	0.00	0.00
126.73	34.80	27.46	60.65	47.86	30.98	24.44	0.00	0.00	0.30	0.24
145.38	27.50	18.92	80.68	55.50	36.49	25.10	0.70	0.48	0.00	0.00
255.43	25.53	9.99	103.87	40.66	65.70	25.72	11.37	4.45	48.96	19.17
281.25	123.16	43.79	93.20	33.14	58.84	20.92	6.06	2.15	0.00	0.00
80.58	48.18	59.79	23.20	28.79	9.17	11.38	0.03	0.03	0.00	0.00
144.56	86.33	59.72	35.04	24.24	22.78	15.75	0.13	0.09	0.29	0.20
317.25	134.65	42.44	128.40	40.47	54.07	17.04	0.00	0.00	0.13	0.04
57.98	2.13	3.67	50.25	86.67	4.10	7.08	0.55	0.94	0.95	1.63
340.51	148.07	43.49	104.31	30.63	77.18	22.66	10.36	3.04	0.60	0.18
568.61	215.12	37.83	97.61	17.17	227.34	39.98	25.67	4.51	2.88	0.51
184.74	96.03	51.98	60.45	32.72	27.63	14.96	0.63	0.34	0.00	0.00
1,778.54	272.23	15.31	725.02	40.76	657.95	36.99	108.50	6.10	14.85	0.83
450.05	163.13	36.25	207.16	46.03	78.95	17.54	0.00	0.00	0.82	0.18
68.62	41.24	60.09	19.09	27.82	8.29	12.09	0.00	0.00	0.00	0.00
215.50	67.91	31.51	73.56	34.13	72.32	33.56	1.72	0.80	0.00	0.00
188.99	2.30	1.22	173.16	91.63	7.64	4.04	5.74	3.04	0.15	0.08
374.49	45.01	12.02	239.29	63.90	84.08	22.45	4.98	1.33	1.14	0.31
353.90	93.31	26.37	155.69	43.99	89.17	25.20	15.73	4.45	0.00	0.00
1,176.17	461.90	39.27	437.69	37.21	270.11	22.97	0.00	0.00	6.47	0.55
186.94	99.64	53.30	37.88	20.26	48.49	25.94	0.93	0.50	0.00	0.00
237.28	88.31	37.22	106.95	45.07	40.27	16.97	1.74	0.73	0.00	0.00
620.91	198.09	31.90	240.34	38.71	176.57	28.44	5.87	0.95	0.04	0.01
465.53	195.87	42.06	174.67	37.52	94.07	20.21	0.97	0.21	0.00	0.00

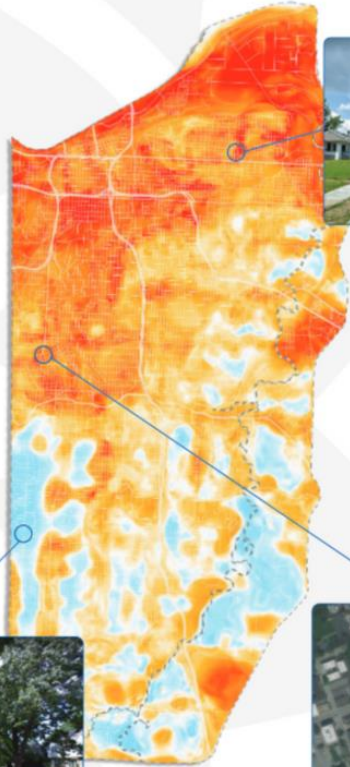


TREE EQUITY SCORE



Initial Observations

The distribution of heat across a region often varies by qualities of the land and its use. Here are several observations of how this phenomenon may be occurring in your region.



Where tree cover is lacking, residential streets heat up.



Shaded residential streets areas mature tree canopy keep temperatures low during the peak heat of the day.



Asphalt-dense areas with homogeneous building heights trap heat and remain warm throughout the day.

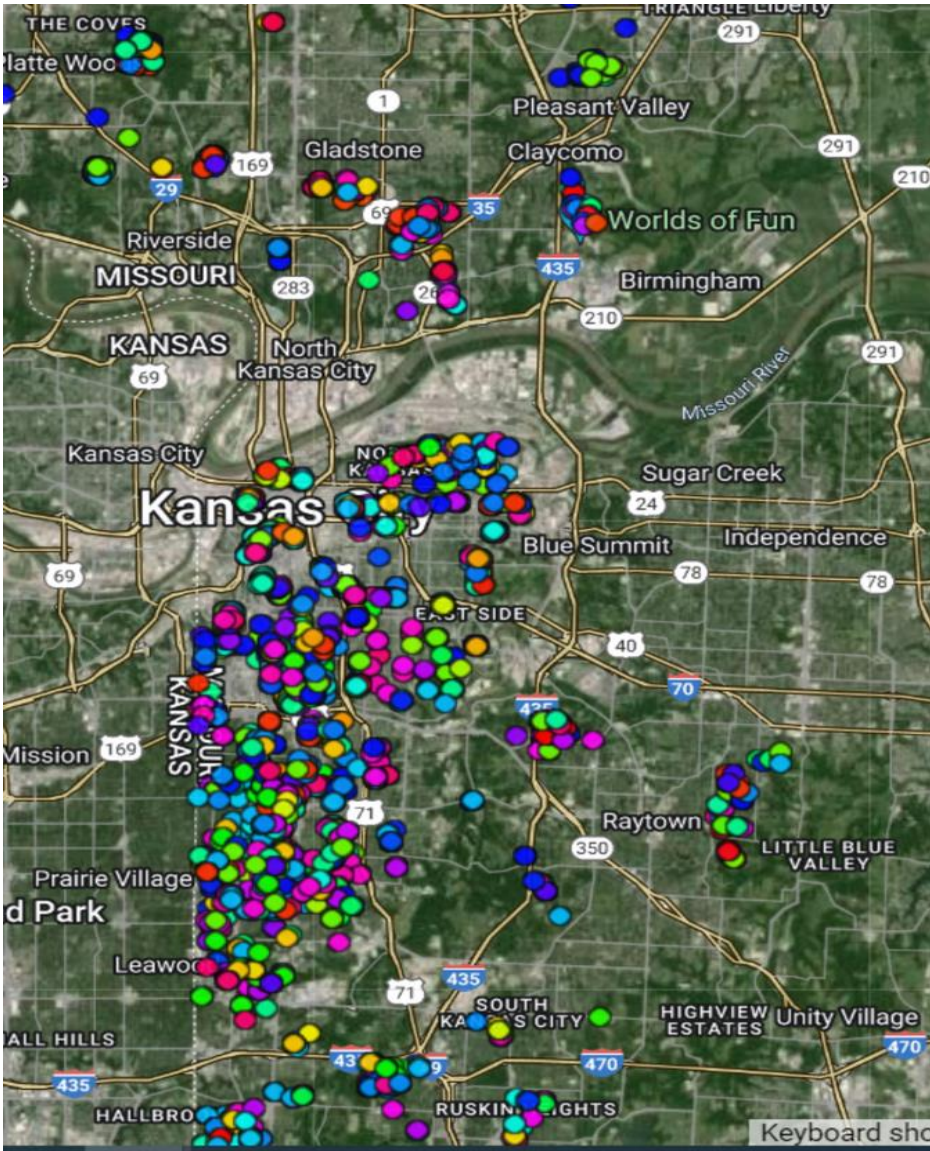
8

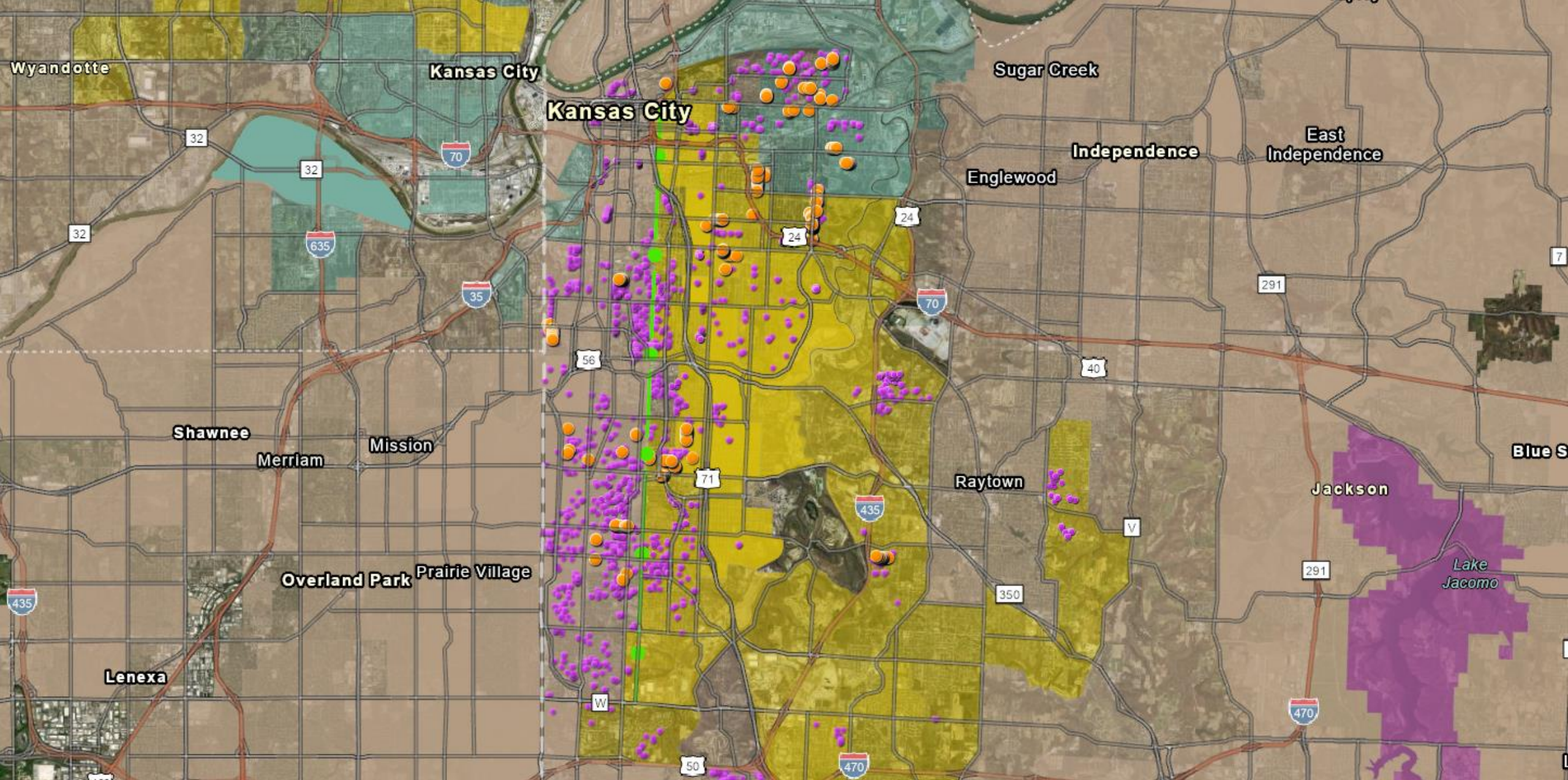
HEAT ISLAND EFFECT

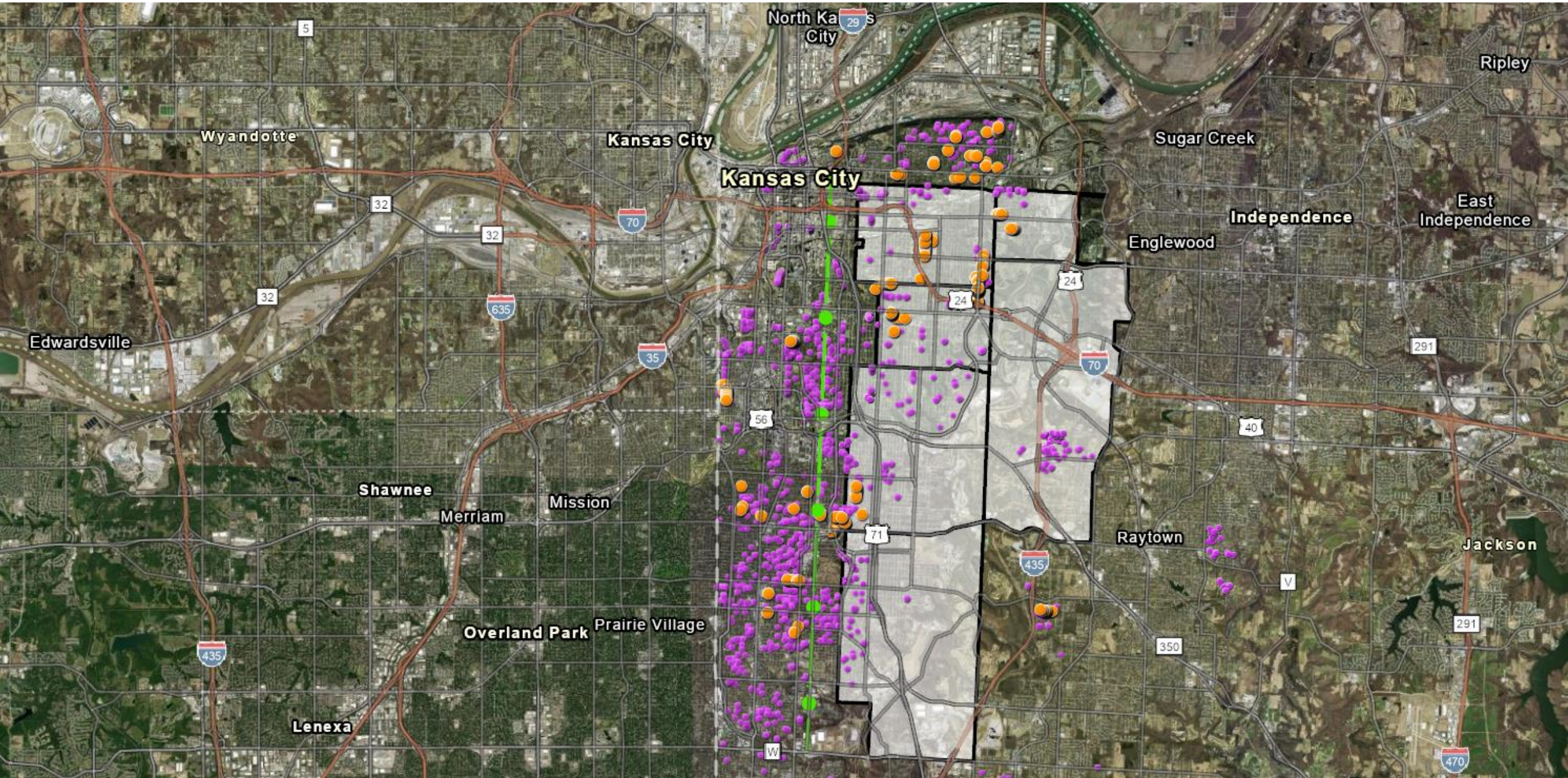
- We use data such as this heat map to determine where to focus our planting efforts
- Challenge - lack of existing infrastructure to support tree plantings
 - ROW size
 - Wrong tree wrong place
 - Broken sidewalks

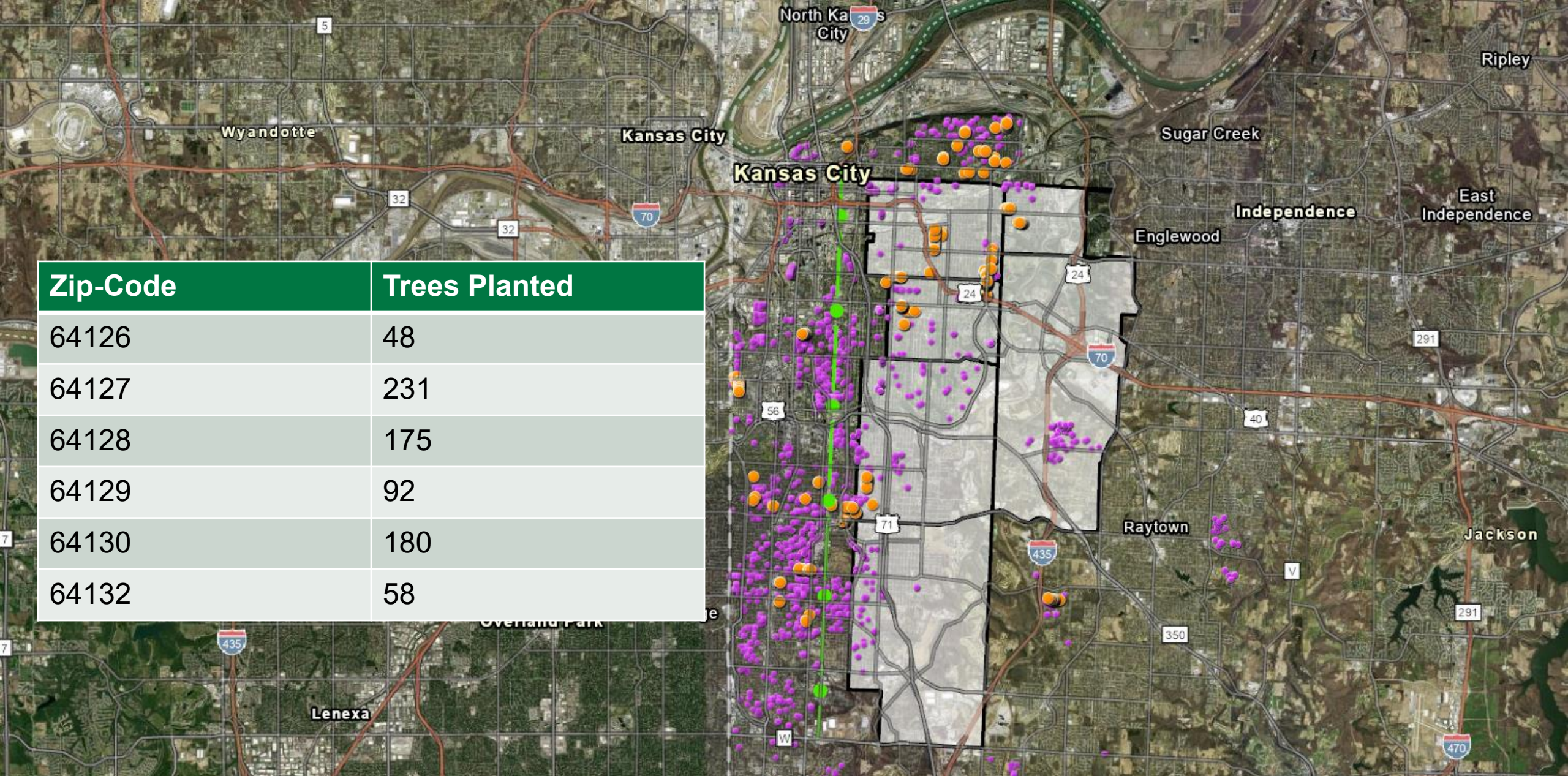
IN-HOUSE DATA

- Each point on this map represents a tree that we have planted
- We do our best to focus outreach efforts on areas where we have not planted, but there are generally some challenges:
 - Lack of infrastructure
 - **Lack of trust, often due to historical inequities**
 - Negative perceptions of trees









Zip-Code	Trees Planted
64126	48
64127	231
64128	175
64129	92
64130	180
64132	58

WHO IS MOST OFTEN UNHEARD IN YOUR COMMUNITY? HOW DO YOU REACH THEM?

WHAT DOES COMMUNITY ENGAGEMENT LOOK LIKE IN YOUR ORGANIZATION



THE POWER OF PARTNERSHIPS

THE POWER OF PARTNERSHIPS: ENERGY SAVING TREES

- Started in 2018 With KCP&L
- ~800 trees for private property



THE POWER OF PARTNERSHIPS: ENERGY SAVING TREES

- Started in 2018 With KCP&L
- ~800 trees for private property

- Partnership Continued & Expanded
Energry & KCMO added funding in 2022/23.



CANOPY
COVER KC



THE POWER OF PARTNERSHIPS: ENERGY SAVING TREES

- Started in 2018 With KCP&L
- ~800 trees for private property
- Partnership Continued & Expanded Evergy & KCMO added funding in 2022/23
- KCMO still runs its own give away & Evergy expands to new cities with EST



CANOPY
COVER KC



THE POWER OF PARTNERSHIPS: ENERGY SAVING TREES

- Started in 2018 With KCP&L
- ~800 trees for private property
- Partnership Continued & Expanded Evergy & KCMO added funding in 2022/23
- KCMO still runs its own give away & Evergy expands to new cities with EST
- Evergy & BTG partner on NEW program for energy & Water conservation



CANOPY
COVER KC



THE POWER OF PARTNERSHIPS

- Crossroads Community Association
 - Partnership started in 2022 planting just 10 trees
 - They liked our education and mission and became invested in greening the Crossroads
 - 2024 Spire/ Mears agreed to add ~150 new tree wells at no cost
 - HTA waters and maintains, CCA does business engagement, outreach and fundraising.



THE POWER OF PARTNERSHIPS



- Neighborhood Associations/HOAs
 - Ex. Troostwood, Tri-Blenheim
- Conservation + Environmental Park Stewards
- Van Brunt Soccer students
- Missouri Department of Conservation (MDC)
- Corporate partnerships

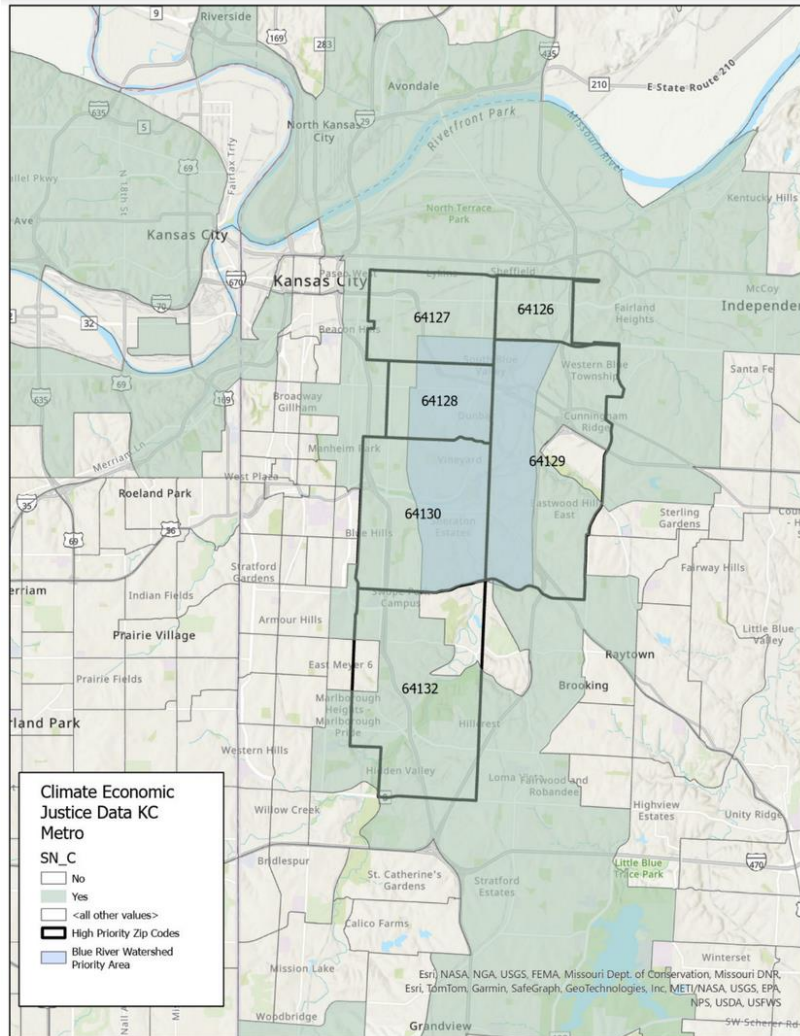
CONSERVATION AND ENVIRONMENTAL STEWARDS CASE STUDY

CONSERVATION AND ENVIRONMENTAL STEWARDS

- Group of ~10 through UMKC Center's for Neighborhoods
- Evaluated parks in Quality of Life Improvement District
- ~ 7 events per planting season.



QLID DISTRICT



QUALITY OF LIFE INVESTMENT DISTRICT (QLID) PARK-CENTRIC PLAN



CYPRESS PARK

ACQUISITION: 1967
ACRES: 5.9



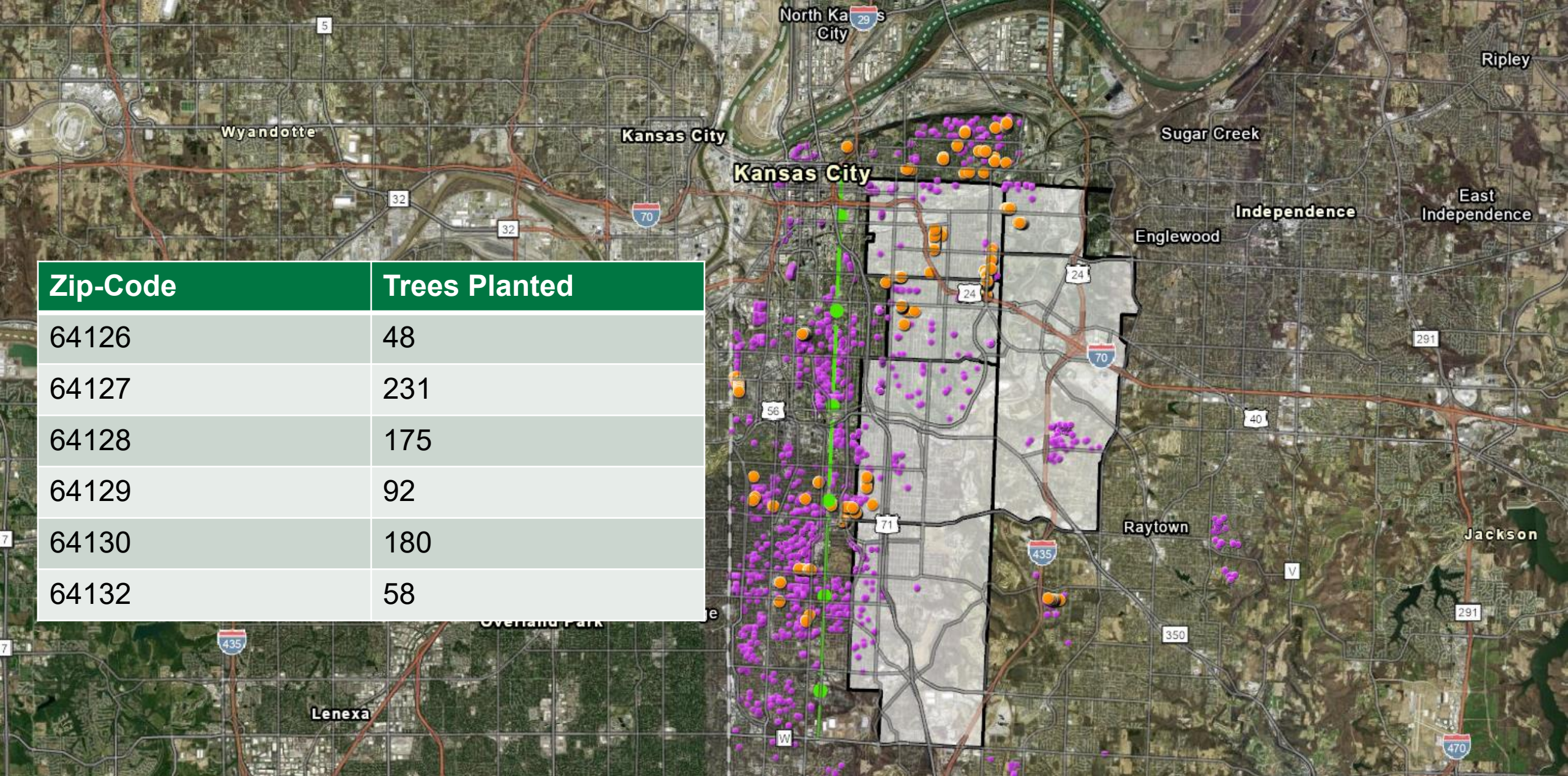
QUALITY OF LIFE INVESTMENT DISTRICT (QLID) PARK-CENTRIC PLAN



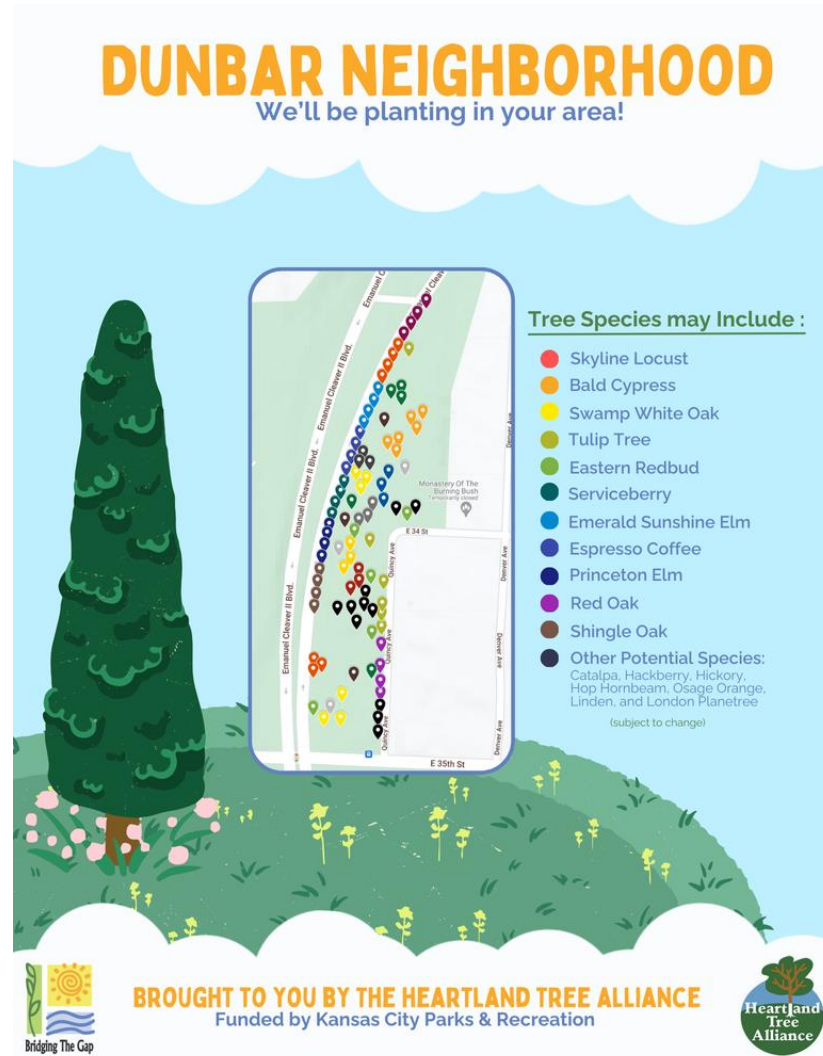
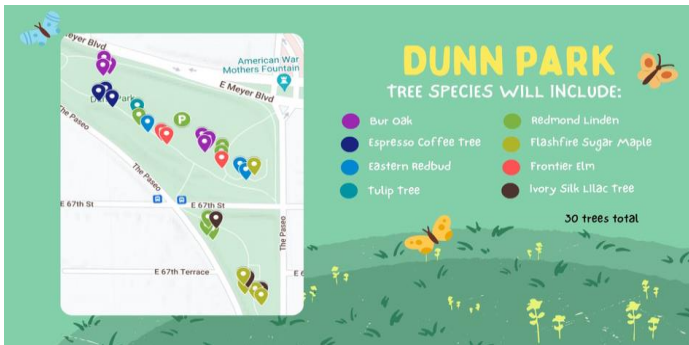
DUNBAR PARK

ACQUISITION: 1943
ACRES: 2.94
DUNBAR NEIGHBORHOOD

- Life expectancy is on average 15 years less in these zip codes
- 64126, 64127, 64128, 64129, 64130, and 64132
- 38 parks located within the District
- We work with the stewards to prioritize tree plantings and other upgrades



COMMUNITY OUTREACH



Tree Planting Event with Heartland Tree Alliance and Supply Giveaway

Join us for a tree planting event **Saturday, May 11th** as we plant 23 trees in the park. We will be handing out household supply kits to the first neighbors who come down to the park.

SAVE THE DATE!
May 11th, 2024
10AM- 1 PM

SIGN UP TO VOLUNTEER



SIGN UP

BRIDGINGTHEGAP.ORG/BTGEVENTS



EASTWOOD HILLS CASE STUDY

HTA NEIGHBORHOOD ASSESSMENT

- Google form for ease of use and ability to share
- Covers 7 sectors of a community that we thought would be important

Section 4 of 7

Intersections & Sidewalks
Description (optional)

Are side walks present?

No sidewalks

Sidewalk only on 1 side of street

Sidewalks on both sides of street

Other...

If no Sidewalks are present is there space to walk that is safe from traffic?

Yes

No

Community Partners & Assets

While in neighborhood, if you notice additional partners that weren't added to map during pre-assessment, add them here. Add them to the map when back at office.

List partners and assets to add to map.

Long answer text

Is there a Neighborhood Association?

Yes

No

Not Sure

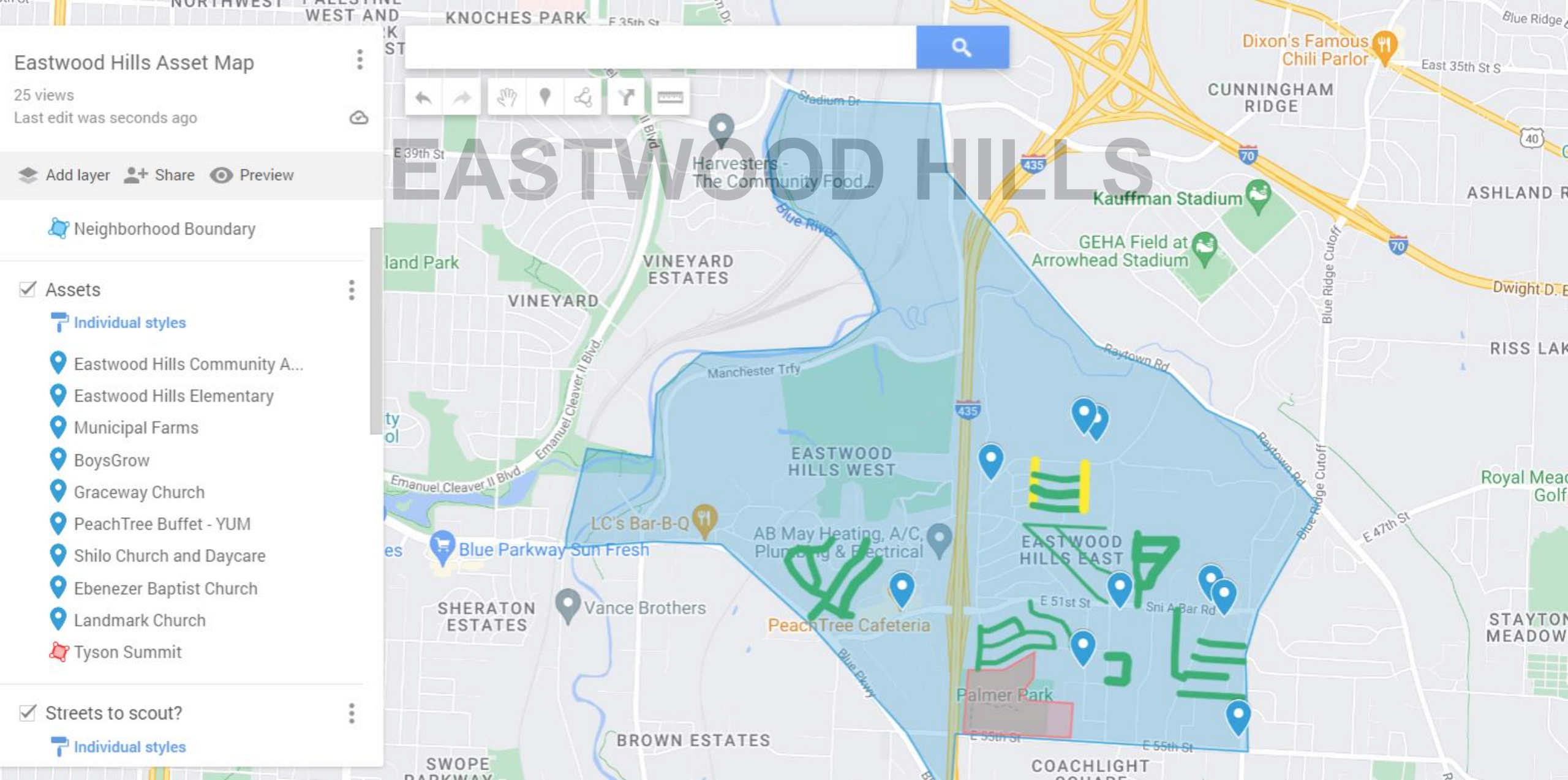
Other...

Section 6 of 7

Neighborhood Features
Description (optional)

Community Destinations Present:

	1	2	3+
Bank	<input type="radio"/>	<input type="radio"/>	<input type="radio"/>
Big-Box Retail	<input type="radio"/>	<input type="radio"/>	<input type="radio"/>
Community Centers	<input type="radio"/>	<input type="radio"/>	<input type="radio"/>
Community Gardens	<input type="radio"/>	<input type="radio"/>	<input type="radio"/>
Doctors Office	<input type="radio"/>	<input type="radio"/>	<input type="radio"/>
Farmers Market	<input type="radio"/>	<input type="radio"/>	<input type="radio"/>



EASTWOOD HILLS TREE PLANTING PROJECT

The Two Priority Zones in your neighborhood that we are targeting are highlighted in green.

Chosen because:

- 🌳 Low Tree Cover
- 🌳 Available Planting Space
- 🌳 Continued Loss of Ash trees throughout

Heartland Tree Alliance will plant, water, prune, and maintain these trees!

Planting Date: Saturday October 15th 9-12



Questions? Email Trees@bridgingthegap.org or Call 816-656-8918

TYPES OF TREES WE ARE PLANTING

Northern Red Oak



large oak with red fall color, tolerates compacted soils, rounded shape

Sterling Silver Linden



broad oval shaped tree, dark green leaves have silver backside. Flowers and is loved by pollinators

Tulip Tree



large shade tree with big leaves and flowers that resemble tulips

Green Vase Zelkova



easy to grow in several different soil types, vase shape with smaller leaves

Sugar Maple



upright rounded maple, tolerant of compacted soils, brilliant fall color

NO ESTAMOS DERROTADOS

AVISO DE PLANTADO DE ÁRBOLES

Los árboles mejoran la calidad de vida

Muchos árboles en este vecindario fueron removidos debido al Barrenador Esmeralda del Fresno. Heartland Tree Alliance y KC Parks estarán plantando uno o más árboles en frente de su propiedad, a la par de la calle.

Tiene interés en aprender más acerca de los árboles, cómo podarlos u otras preguntas? Le gustaría seleccionar su árbol? Llame o envíe un mensaje de texto al (816) 656-8918, o envíe un correo electrónico a trees@bridgingthegap.org

MENOS SOMBRA POR AQUÍ



1 de cada 10 árboles en nuestra comunidad serán removidos debido al Barrenador Esmeralda del Fresno.



Si usted **NO QUIERE** un árbol plantado entre 5-10 pies de la calle, contáctenos a más tardar 14 días de haber recibido este aviso. Una vez que el periodo de 14 días ha pasado, no podemos aceptar su pedido.

✉ trees@bridgingthegap.org 📞 (816) 656-8918

WE'RE NOT STUMPED

Trees improve lives and 10% of ours are dying

FREE TREES COMING OCTOBER 15



- 1 Trust that staff will plant, water and prune these new trees
- 2 SIGN UP FOR YOUR FREE TREE:
816-656-8918 trees@bridgingthegap.org
- 3 Attend planting day Saturday, Oct. 15

WWW.TREESFORMYCITY.ORG

WE'RE NOT STUMPED

TREE PLANTING NOTICE

Trees improve lives

Many street trees were removed in your neighborhood due to Emerald Ash Borer. Heartland Tree Alliance and KC Parks are planting new tree(s) in front of your property, next to the street.

Interested in learning more about trees, how to prune them or questions about your tree? Want to choose the tree? **Call or text (816) 656-8918 or email trees@bridgingthegap.org.**

MUCH LESS SHADY AROUND HERE



1 in 10 trees in our community will be removed due to Emerald Ash Borer



If you **DO NOT** want a tree planted within 5-10 feet of the street, contact us within 14 days of receiving this notice. Once the 14-day period has passed, we can no longer honor your request.

✉ trees@bridgingthegap.org 📞 (816) 656-8918

EASTWOOD HILLS



PLANTING DAY!

- Partnered with Neighborhood Association
- Gave away food, energy kits, 3-gallon trees for private property & registered people for water and energy savers visits.
- 60 new trees in the neighborhood

contact tree planters:

✉ trees@bridgingthegap.org
☎ (816) 944-2548

contact water & energy:

✉ leaks@bridgingthegap.org
☎ (816) 890-9600

Special thank you to the Eastwood Hills Community Association for bringing these resources to the community.





EASTWOOD HILLS & TREESILIENCE

- Removing 10 trees on private property
 - **Community Capitol Fund**
 - **Missouri Department of Conservation**
 - **The Nature Conservancy**
 - **Heartland Tree Alliance**
 - **Eastwood Hills Neighborhood Association**
- Replanting with trees in ROW after removal



QUESTIONS??

Tru-Kechia Smith | kechia.smith@bridgingthegap.org
Joe Wheelock | joe.wheelock@bridgingthegap.org